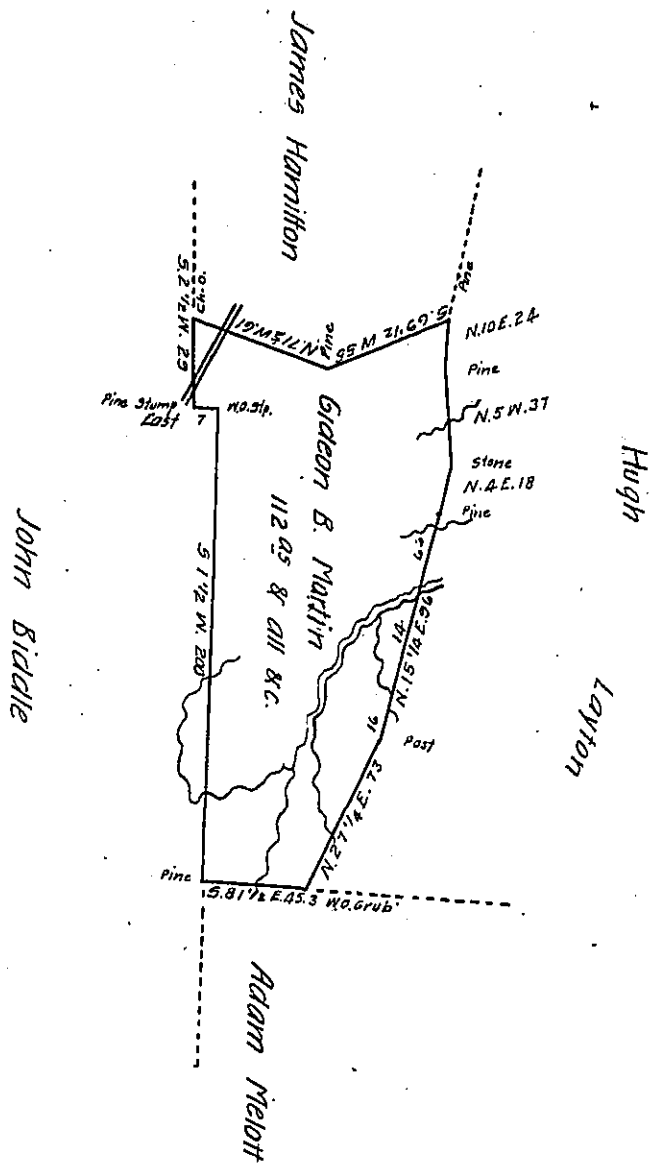


FORM No. 1.



Situate on the Waters of Brush Creek in Providence township Bedford County containing 112 acres and allowance of six per Cent &c Surveyed the 22^d January 1842 on Warrent dated the 17th January 1842 granted to Gideon B. Martin for 112 Acres

Michael Reed D.S.

To. Jacob Sallade Esq. S.G.

IN TESTIMONY that the above is a copy of the original remaining on file in the Department of Internal Affairs of Pennsylvania, made conformably to an Act of Assembly approved the 16th day of February, 1833, I have hereunto set my Hand and caused the Seal of said Department to be affixed at Harrisburg, this third day of October 1906

Laac R. Brown
Secretary of Internal Affairs.